

Lesson 21

Auxiliary Views

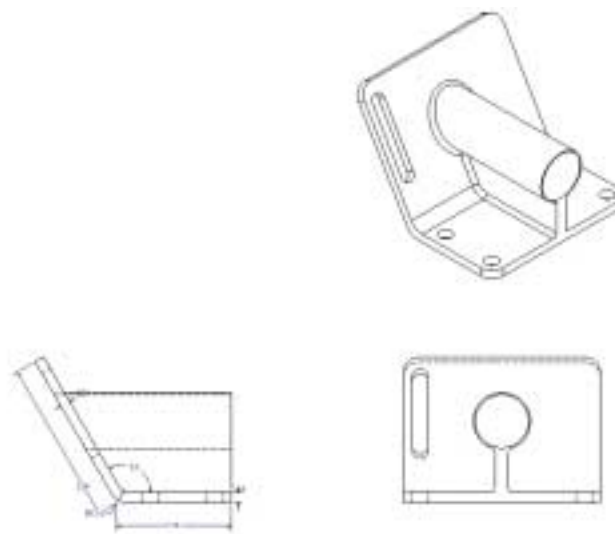
Learning Objectives

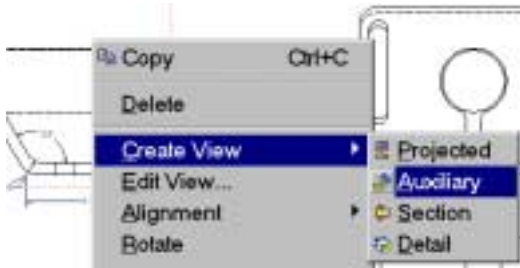
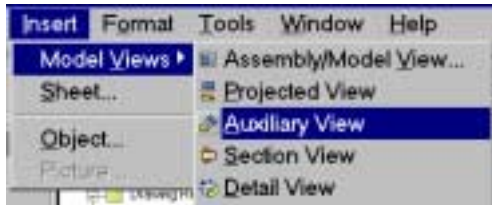
At the conclusion of this lesson, the user will be able to create and edit auxiliary views using parts with inclined planes.

We can use the part created in Lesson 17.

Open a new drawing file using the part. The file name is 'lesson17.ipt'.

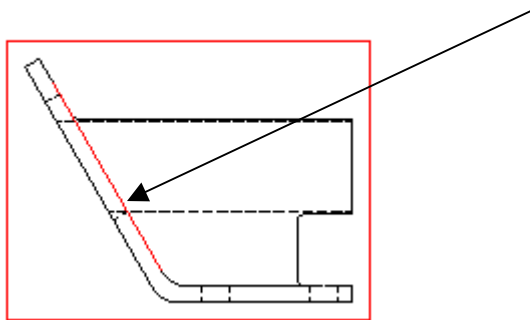
Create the basic orthogonal views as shown.



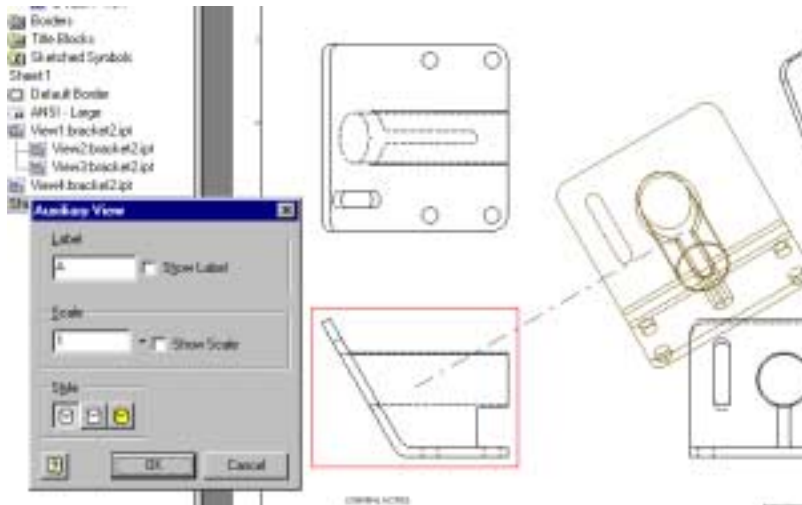


To create an auxiliary view, the user can:

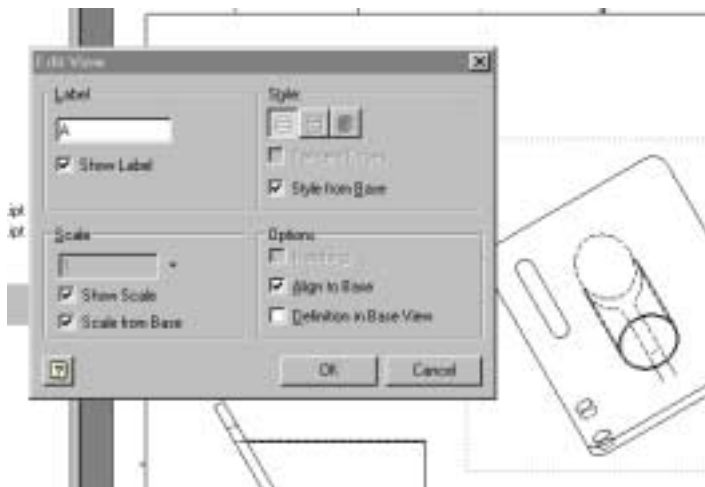
- ◆ Select the Auxiliary View tool from the Drawing Management tools.
- ◆ Select the base view, right click and select Create View->Auxiliary
- ◆ Go to Insert->Model Views->Auxiliary View from the menu.
- ◆ Go to the browser, select the source view for the Auxiliary view, right click and select Create View-> Auxiliary View



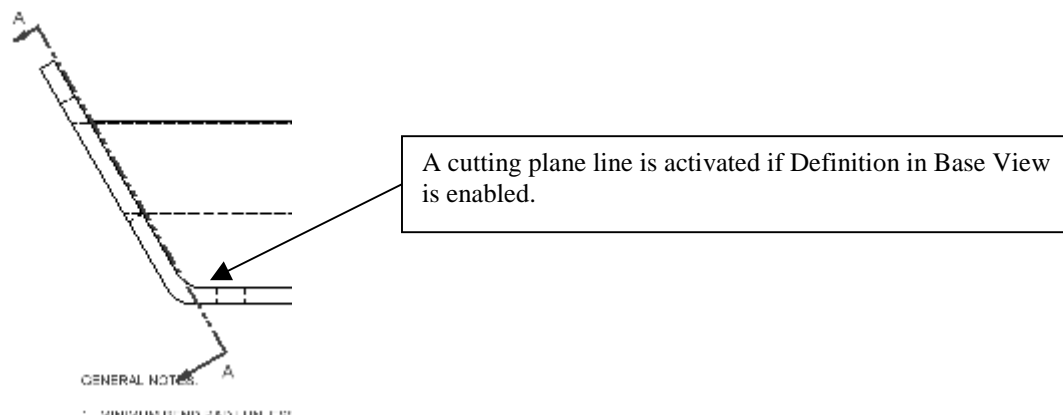
Select the line that the auxiliary view will use as the source plane.



Drag the mouse to where you want to place the view. Pick to place the view.

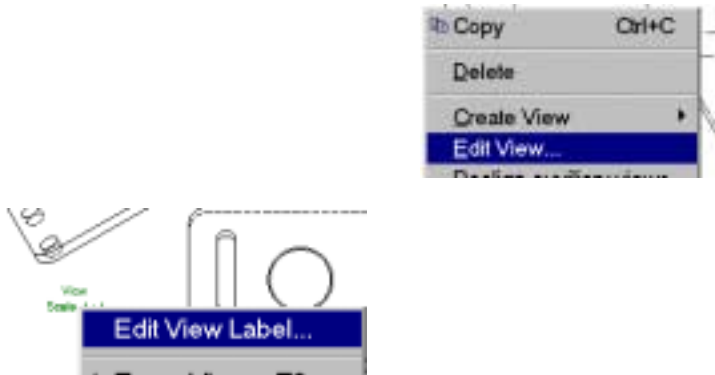


If you want the view to be labeled, place a check in the Show Label box.
If you wish the Scale to be shown, place a check in the Show Scale box.



Edit Auxiliary View

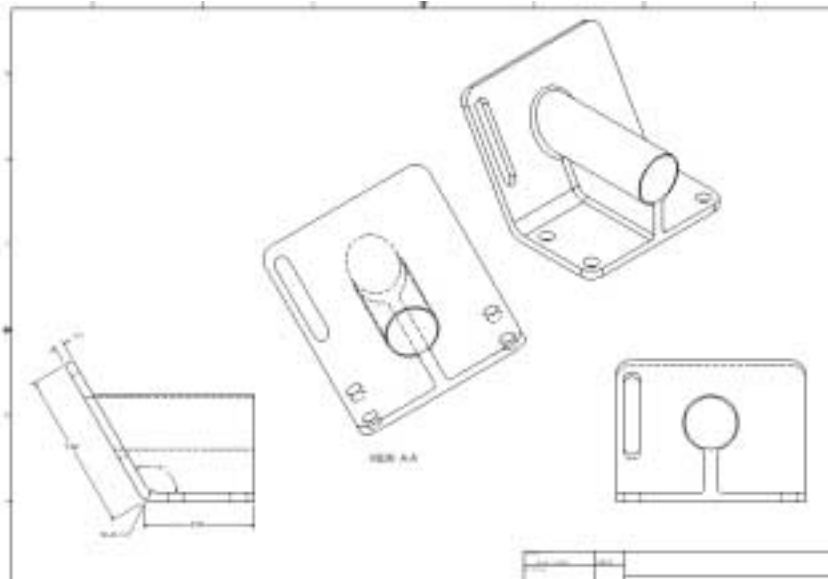
To edit the settings of the Auxiliary View, select the Auxiliary View, right-click and select 'Edit'.



The View Label can be edited by selecting the view label, right-click and select 'Edit View Label'.



A dialog box comes up. To add the word Auxiliary as shown, just place the mouse in front of the word View and type 'Auxiliary'. Press 'OK'.



Our completed drawing.

Save the drawing as 'aux1.idw'.

Notes: